

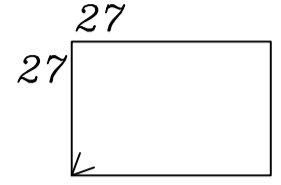
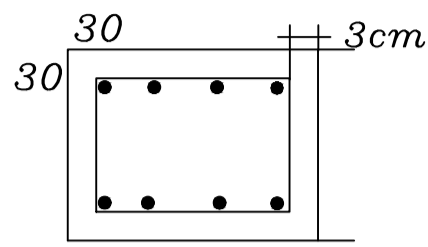
DETALHES DOS PILARES TÉRREO

TRAÇOS DE CONCRETO UTILIZADOS

FCk=300 Kg/cm² 30 MPa

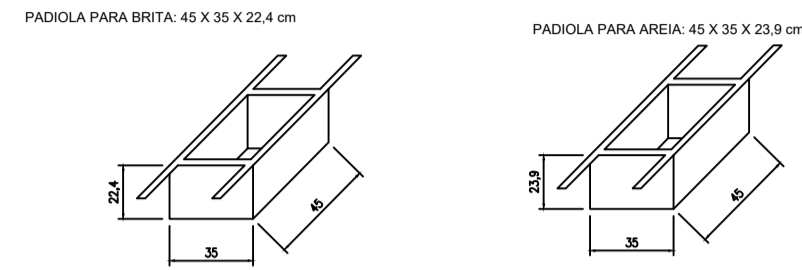
VIGAS BALDRAMES, PILARES, LAJES, VIGAS SAPATAS:
ADMITE-SE ATÉ 20% DE MATAÇÃO, ROLADO PEGUA NA CONCRETAGEM DAS SAPATAS

4#12,5mm



4#12,5mm

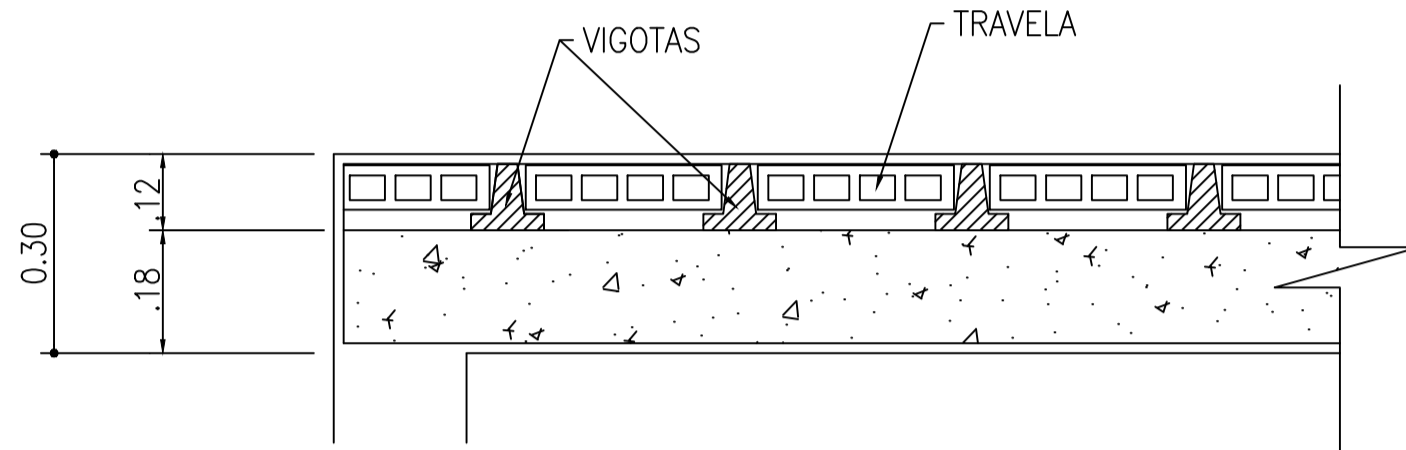
Sem escala



1 SACO DE CIMENTO
3 PADIOLAS DE AREIA (40X30X23,9 cm)
4 PADIOLAS DE BRITA 01 (40X30X22,4 cm)
36,5 LITROS DE ÁGUA

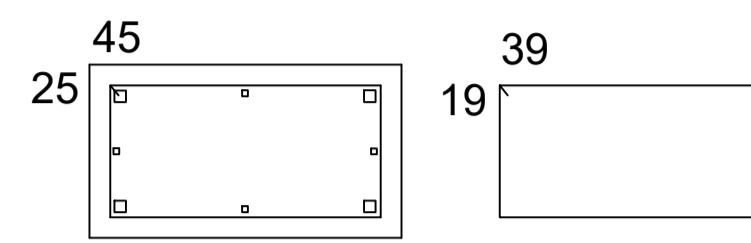
PADIOLA PARA BRITA: 45 X 35 X 22,4 cm

PADIOLA PARA AREIA: 45 X 35 X 23,9 cm



PILARES TÉRREO

PILAR - PLANTA BAIXA GARAGEM

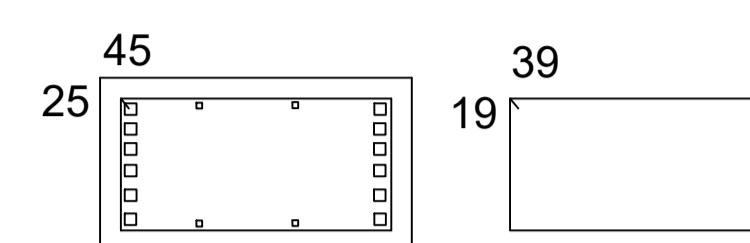


4 #12,5 C:4,30
4 #16,0 C:4,30
19 #5 c/19

Usar esta armadura para os pilares:

P1, P4, P9, P21, P22, P26,
P27, P31, P32, P33, P34, P37
P38, P40, P41, P42, P43, P44.

PILAR - PLANTA BAIXA GARAGEM

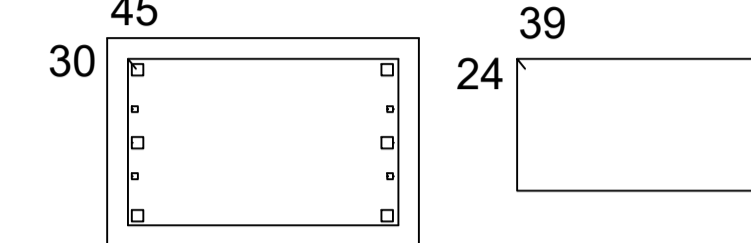


4 #12,5 C:4,30
12 #16,0 C:4,30
19 #5 c/19

Usar esta armadura para os pilares:

P3, P5, P8, P26, P30

PILAR - PLANTA BAIXA GARAGEM

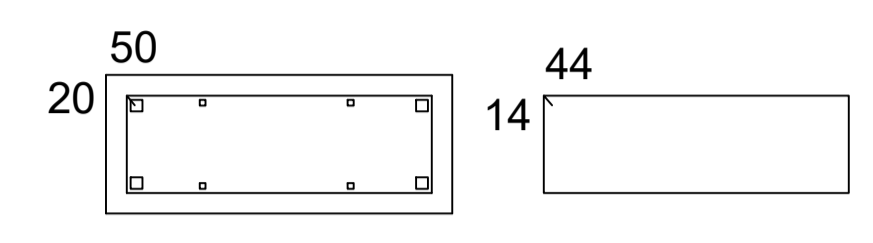


4 #12,5 C:4,80
6 #16,0 C:4,80
19 #5 c/19

Usar esta armadura para os pilares:

P23, P25, P29.

PILAR - PLANTA BAIXA GARAGEM

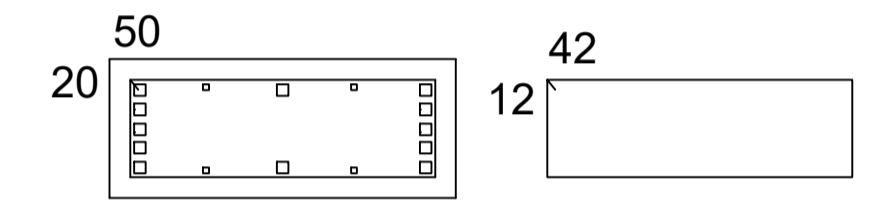


4 #12,5 C:4,80
4 #16,0 C:4,80
22 #5 c/19

Usar esta armadura para os pilares:

P14, P18, P39

PILAR - PLANTA BAIXA GARAGEM

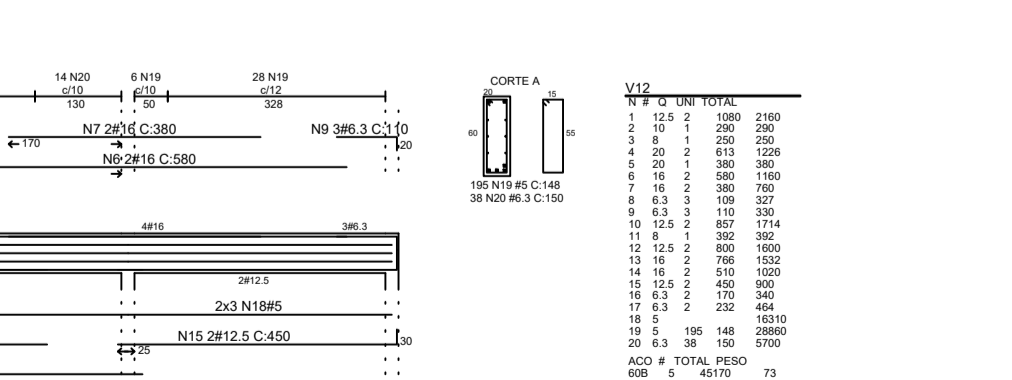
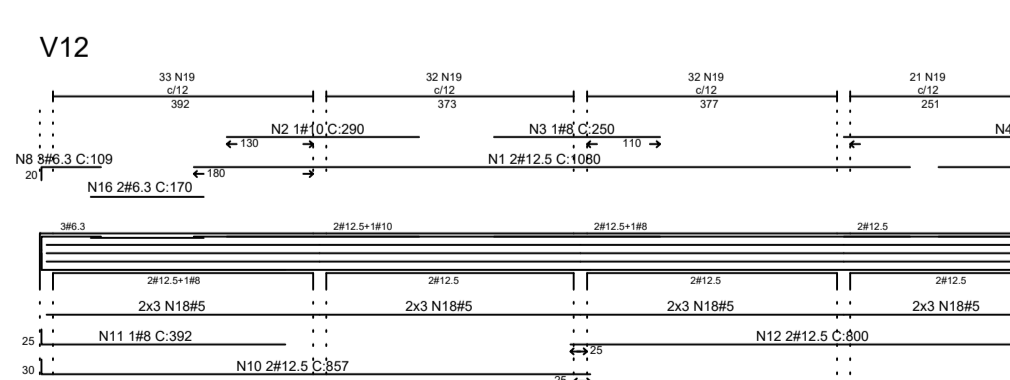
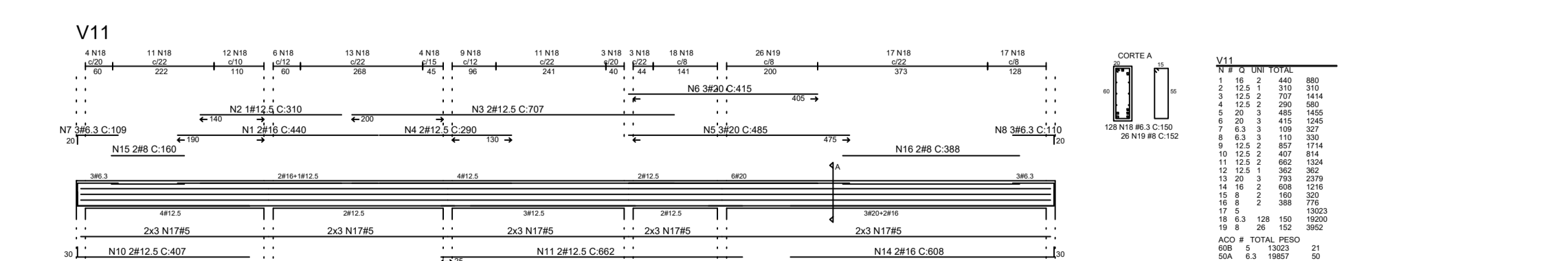
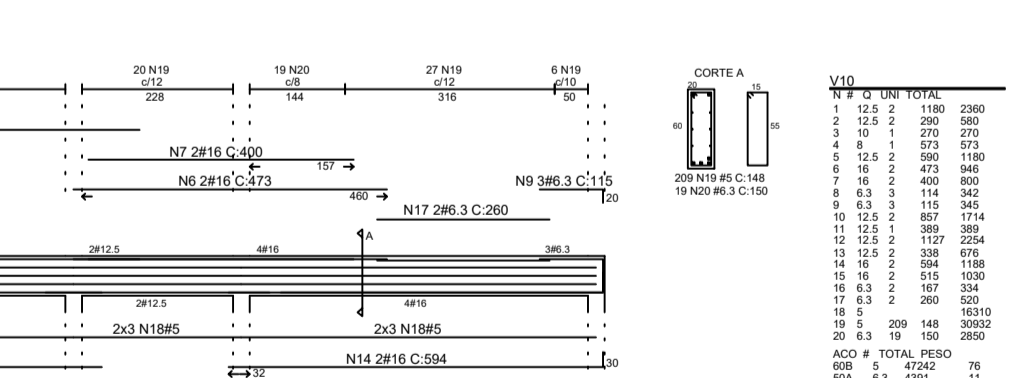
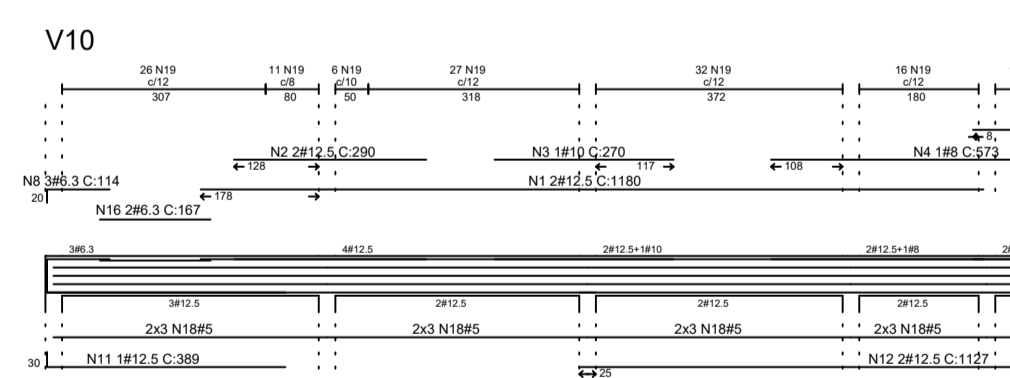
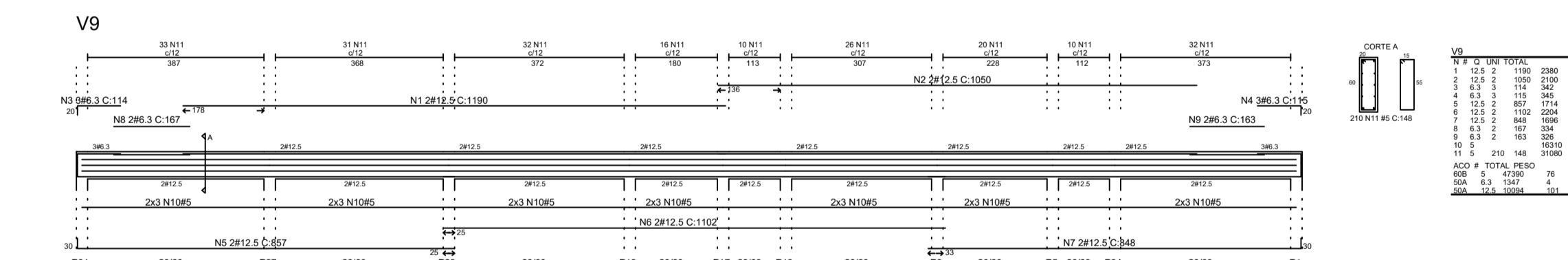
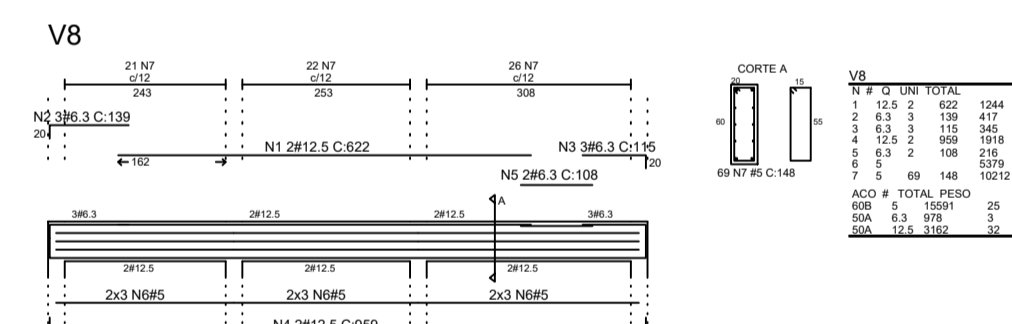
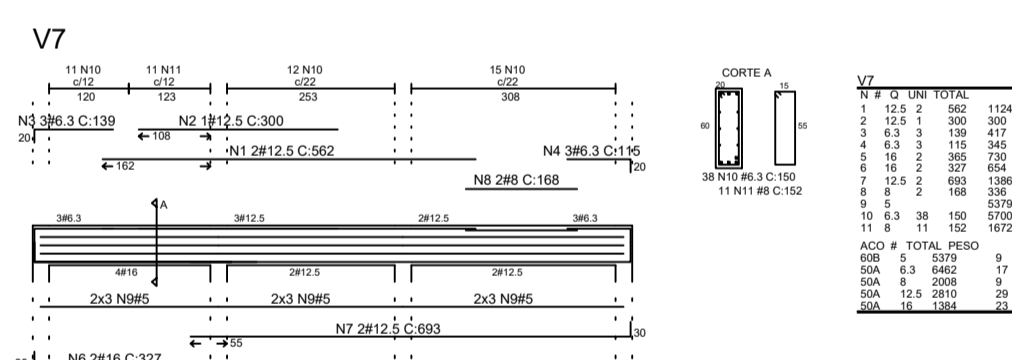
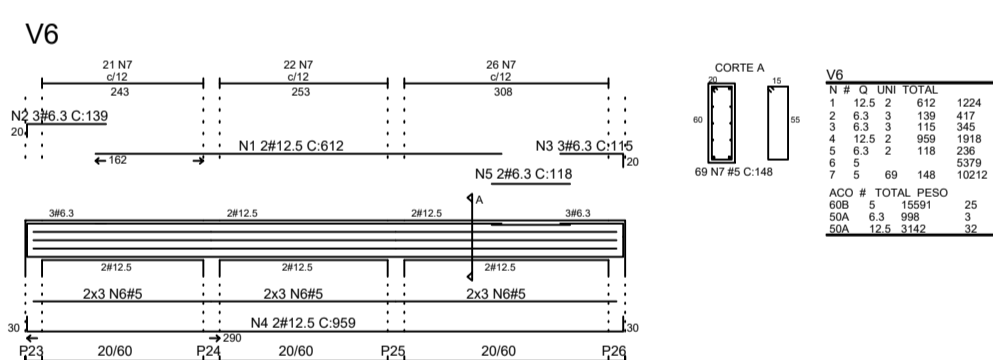
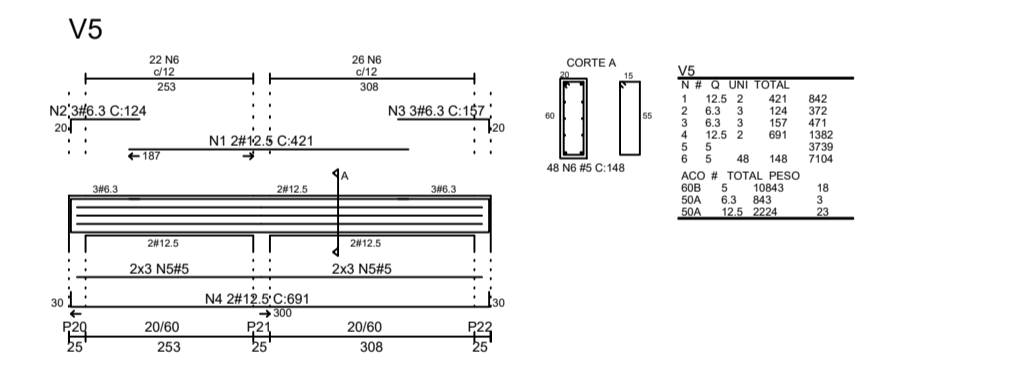
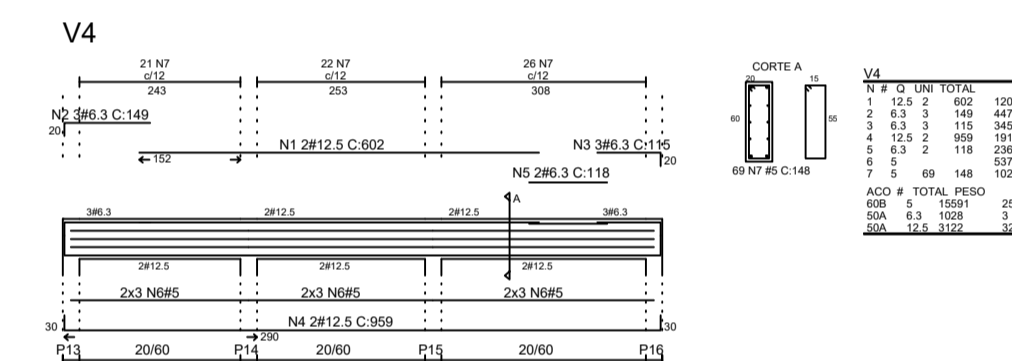
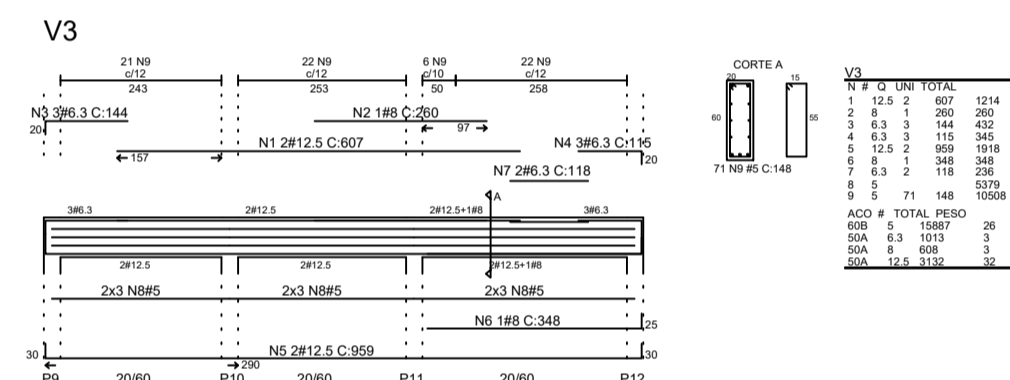
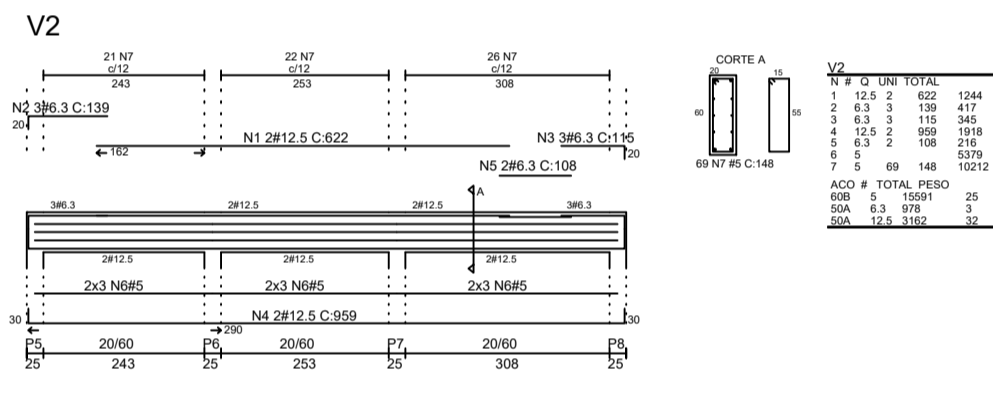
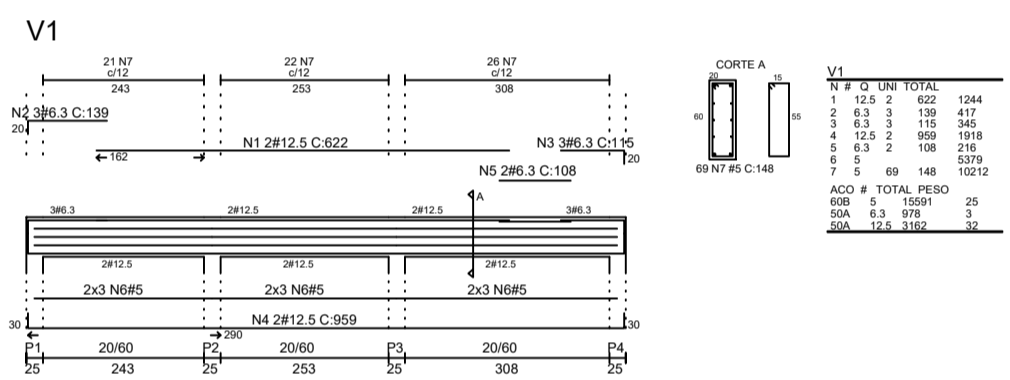


4 #12,5 C:4,80
12 #16,0 C:4,80
22 #5 c/19

Usar esta armadura para os pilares:

P10, P15, P19

VIGAS TÉRREO



INDREDO:	
PROPRIETÁRIO:	EPF/OC
CORREDOR/ZONA:	
CATEGORIA DE USO:	
DECLARO QUE A APROVAÇÃO DO PROJETO, NÃO IMPLICA NO RECONHECIMENTO POR PARTE DA PREFEITURA DO DIREITO DE PROPRIEDADE DO TERRENO.	
PROPRIETÁRIO:	
AUTOR DO PROJETO:	
RESPONSÁVEL TÉCNICO:	
DESENHOS:	DATA:
APROVAÇÕES:	
IDENTIFICAÇÃO DA OBRA:	PRANCHAS
CONTEÚDO DA PRANCHA:	05/06
ESCALA: 1/100 - 1/200	ARQUIVO: