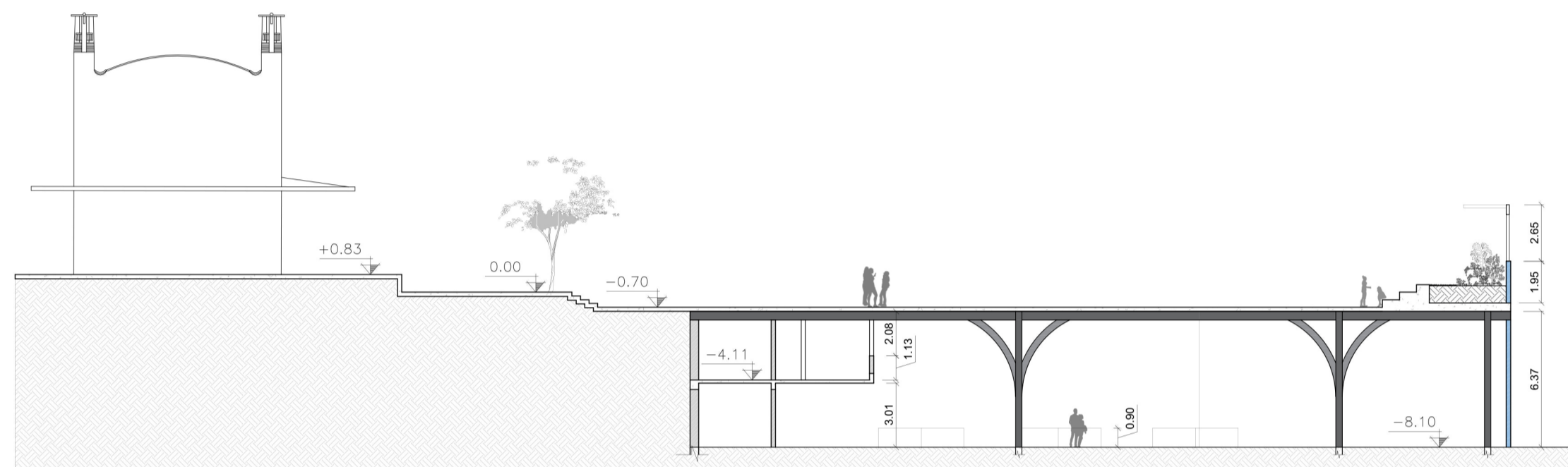
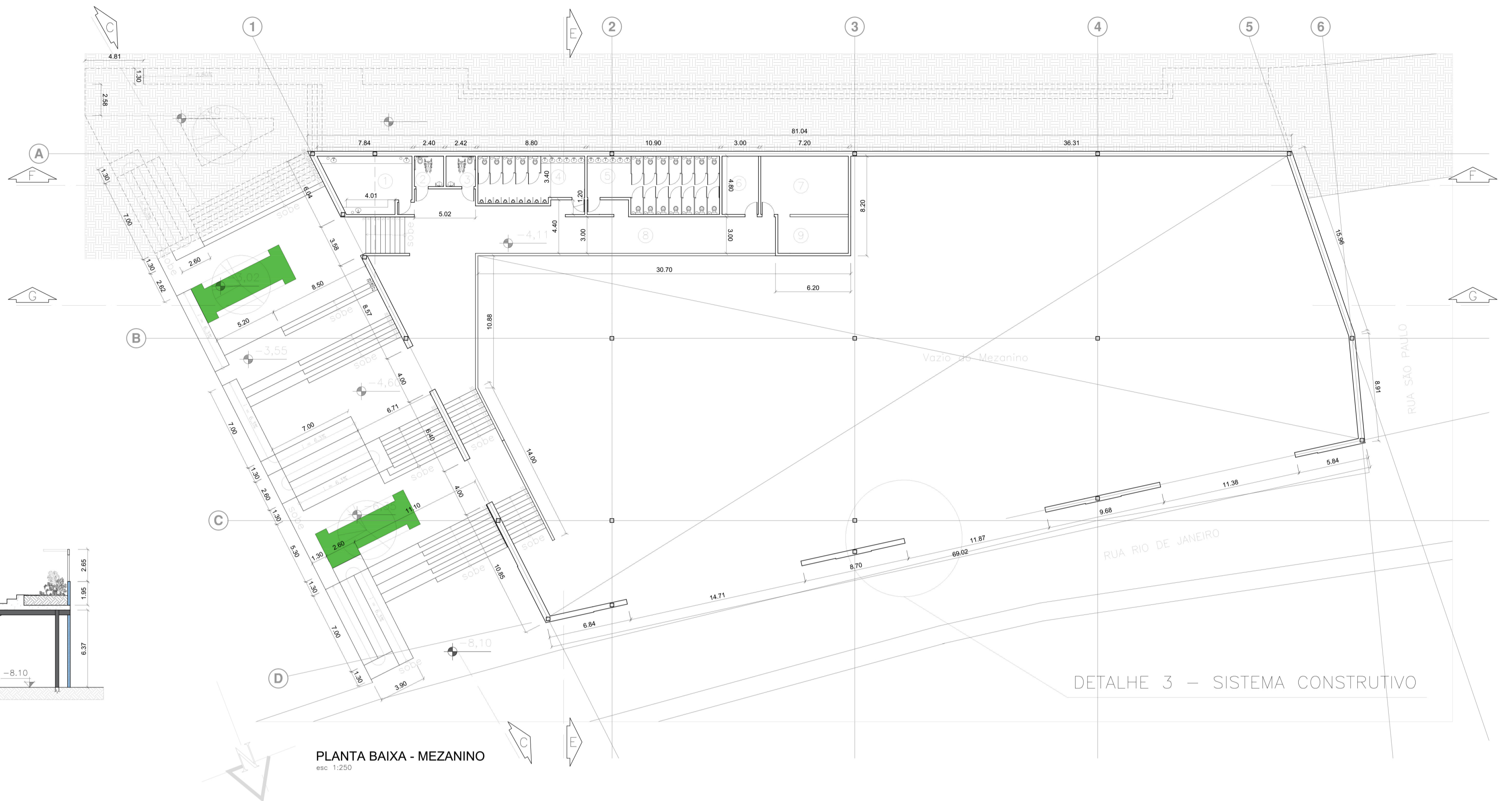


- ① FRALDÁRIO  
30,10M<sup>2</sup>
- ② PNE  
6,0M<sup>2</sup>
- ③ PNE  
6,0M<sup>2</sup>
- ④ SANITÁRIOS MASCULINO  
32,79M<sup>2</sup>
- ⑤ SANITÁRIOS FEMININO  
47,26M<sup>2</sup>
- ⑥ DML  
14,39M<sup>2</sup>
- ⑦ DEPÓSITO  
34,55M<sup>2</sup>
- ⑧ CIRCULAÇÃO  
236,56M<sup>2</sup>
- ⑨ COPA  
17,38M<sup>2</sup>

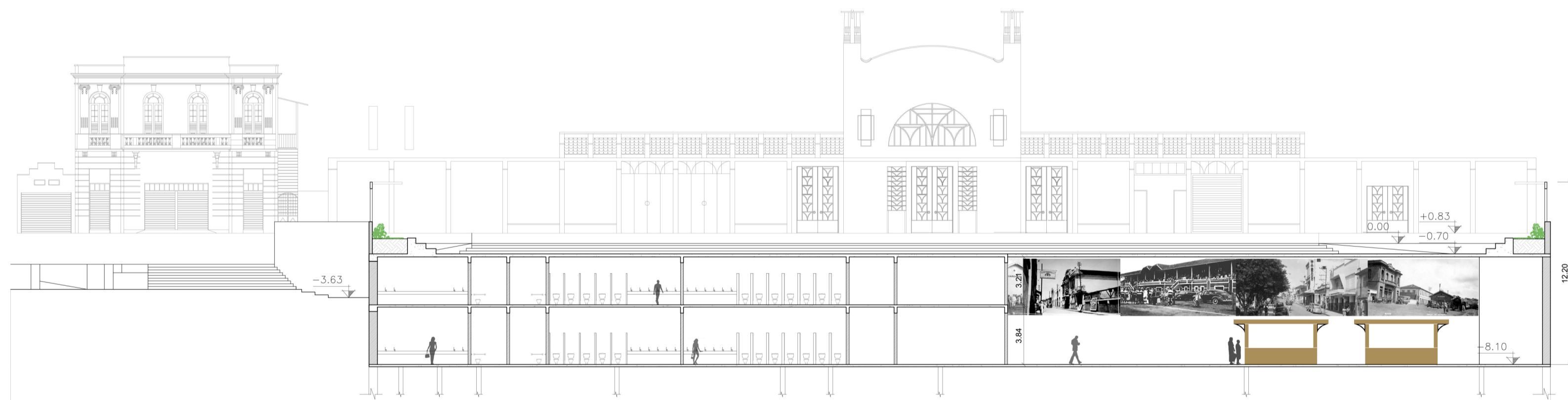


CORTE EE  
esc: 1:250

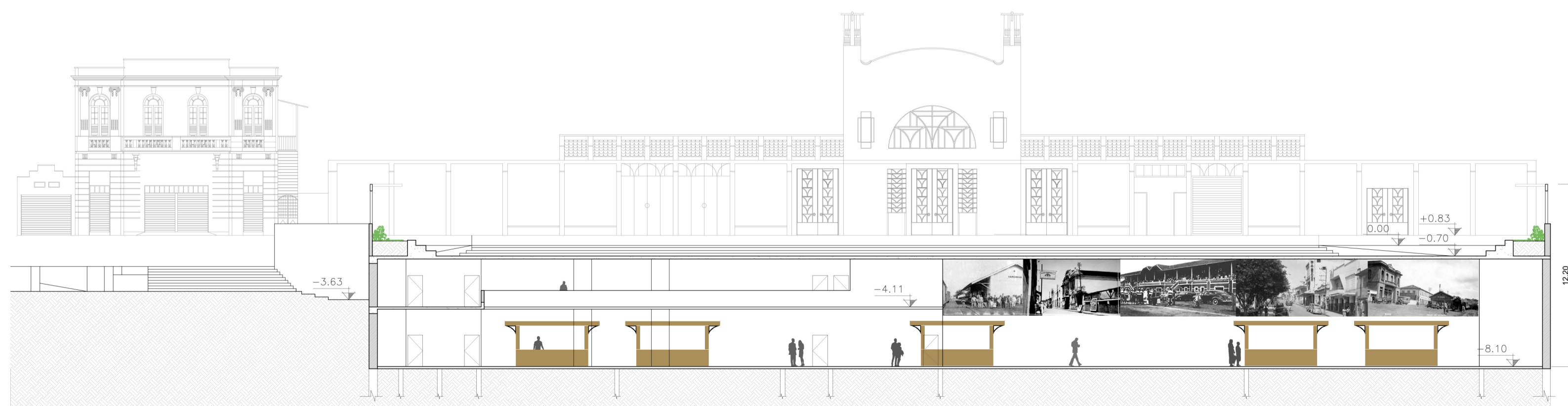


PLANTA BAIXA - MEZANINO  
esc: 1:250

DETALHE 3 - SISTEMA CONSTRUTIVO



CORTE FF  
esc: 1:250



CORTE GG  
esc: 1:250

