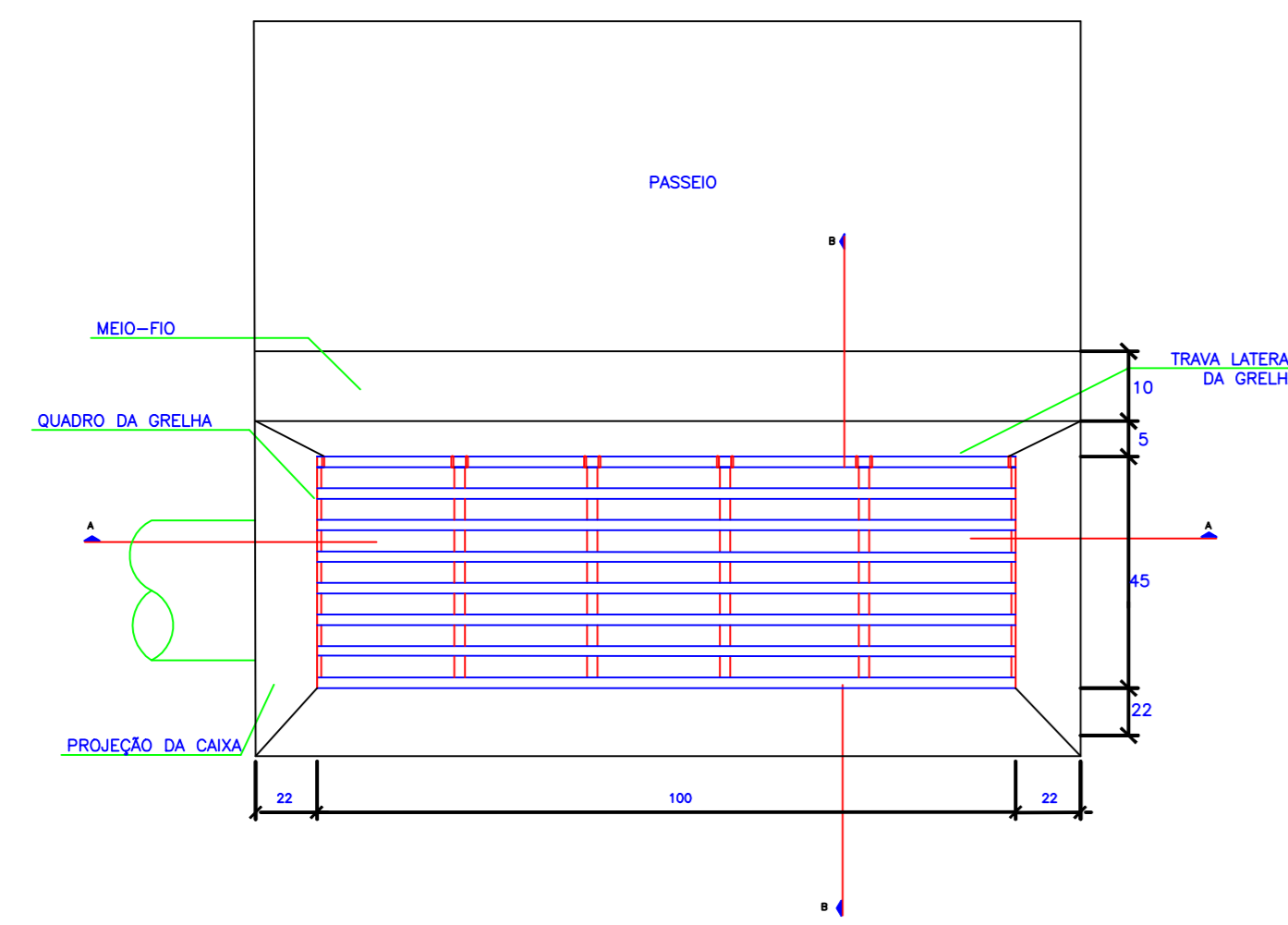
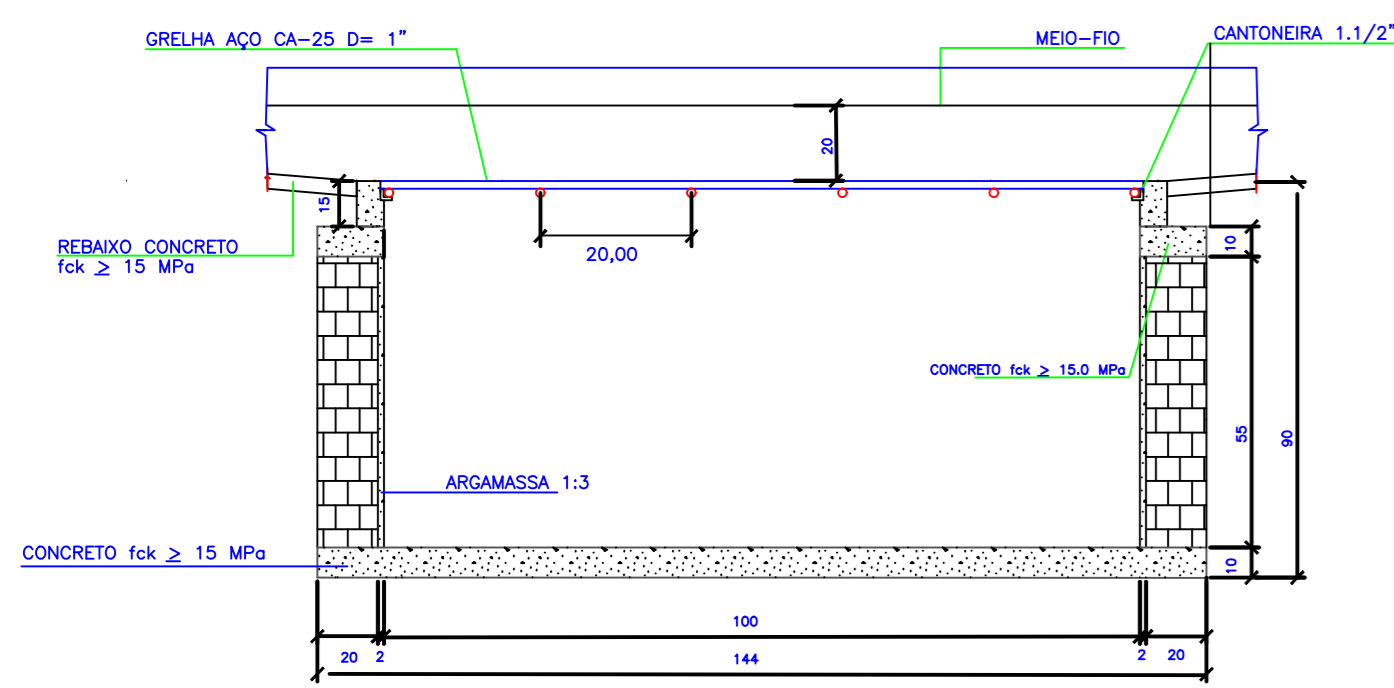


BOCA DE LOBO TIPO GRELHA SAÍDA LATERAL
BL 5, 6, 9, 10

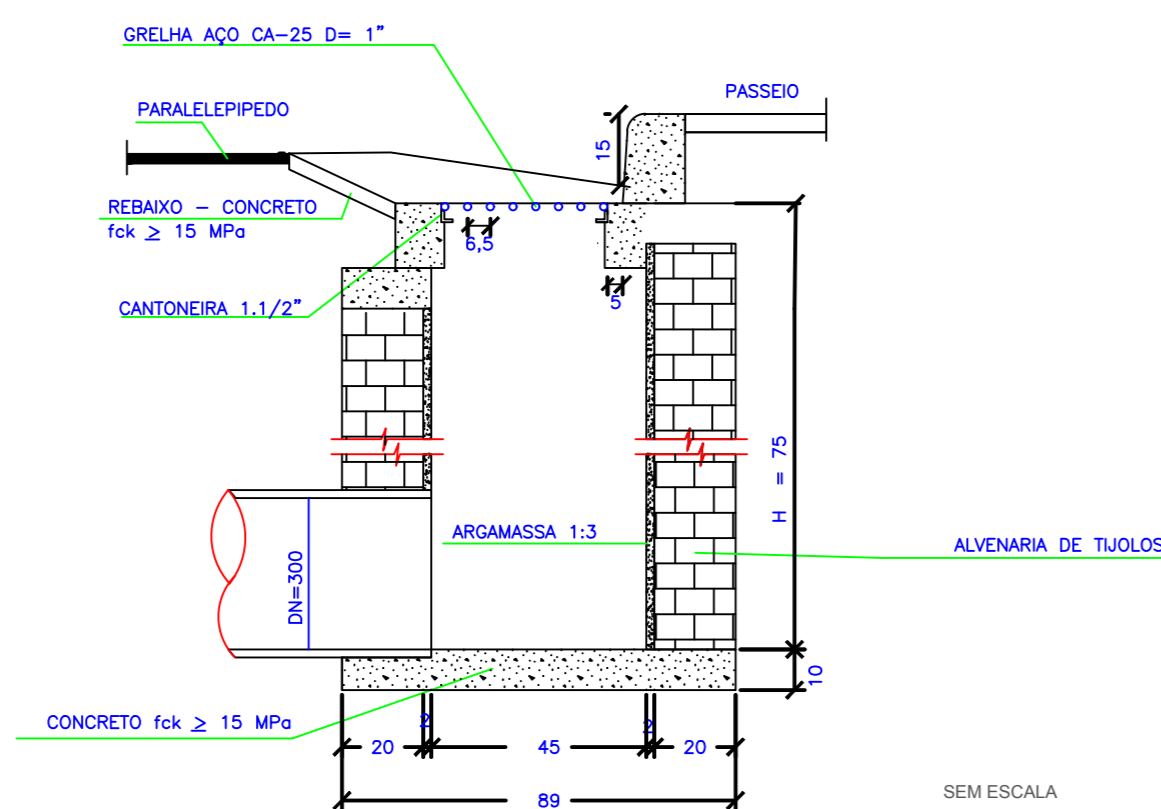
LISTA DE MATERIAIS
Ferro redondo D= 1,0" CA-25 8,0 m
Cantoneira 1 1/2" x 3/16 3,0 m



CORTE A-A

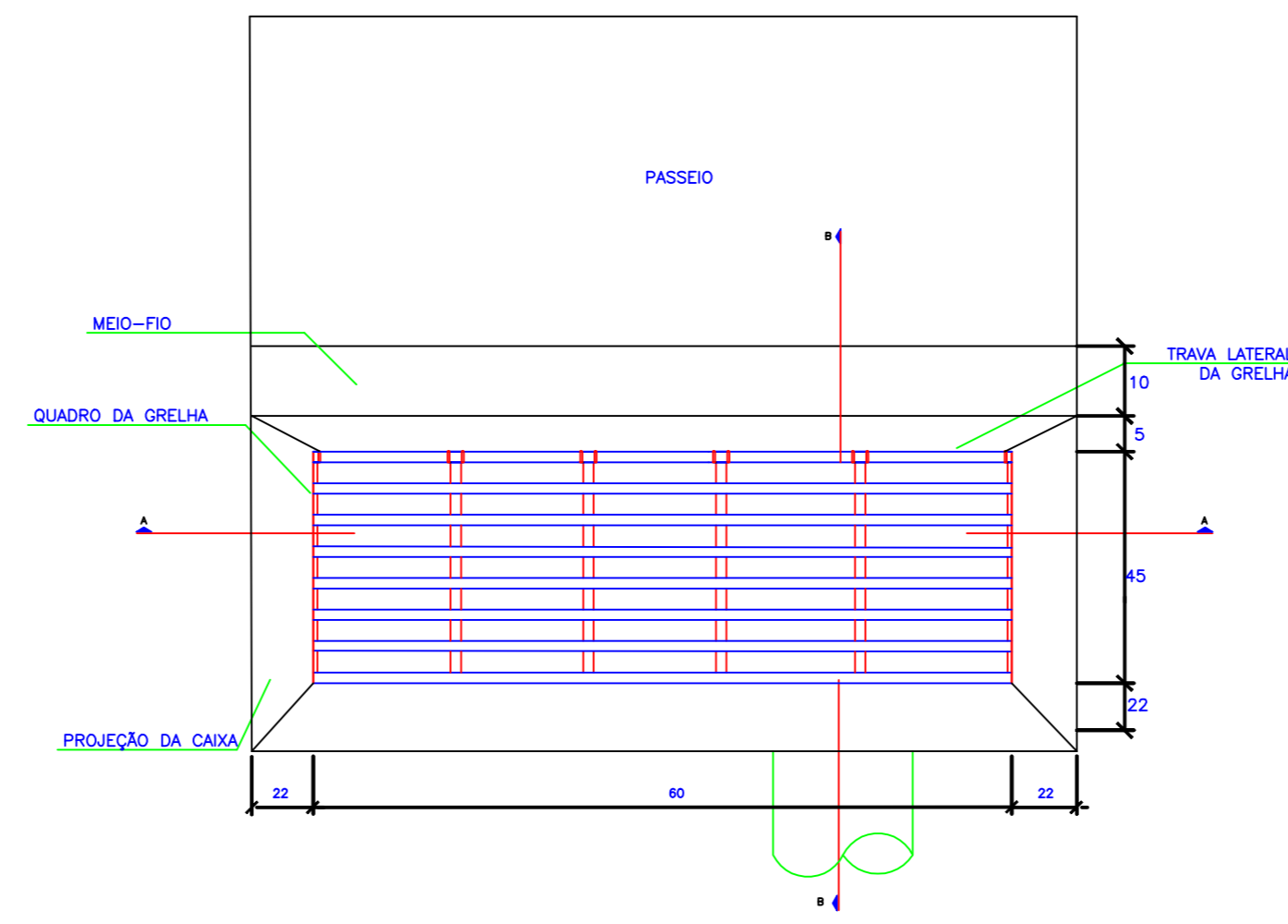


CORTE B-B

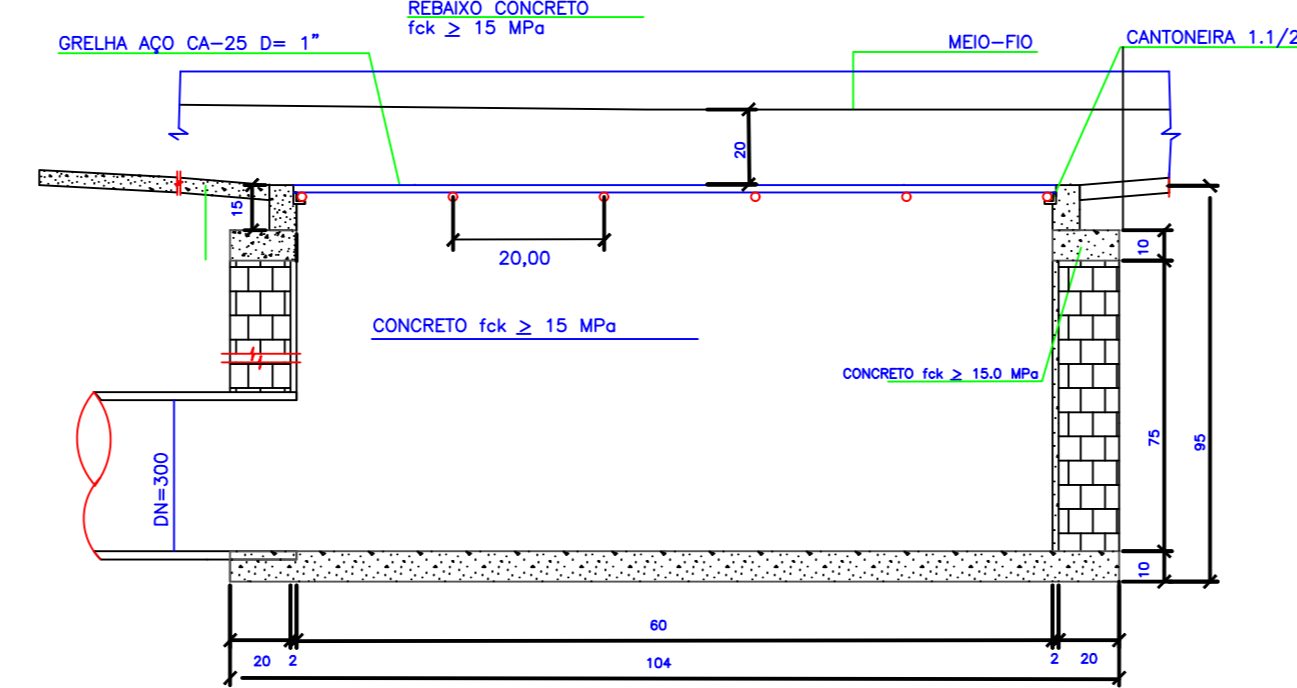


BOCA DE LOBO TIPO GRELHA SAÍDA FRONTAL
BL 1, 2

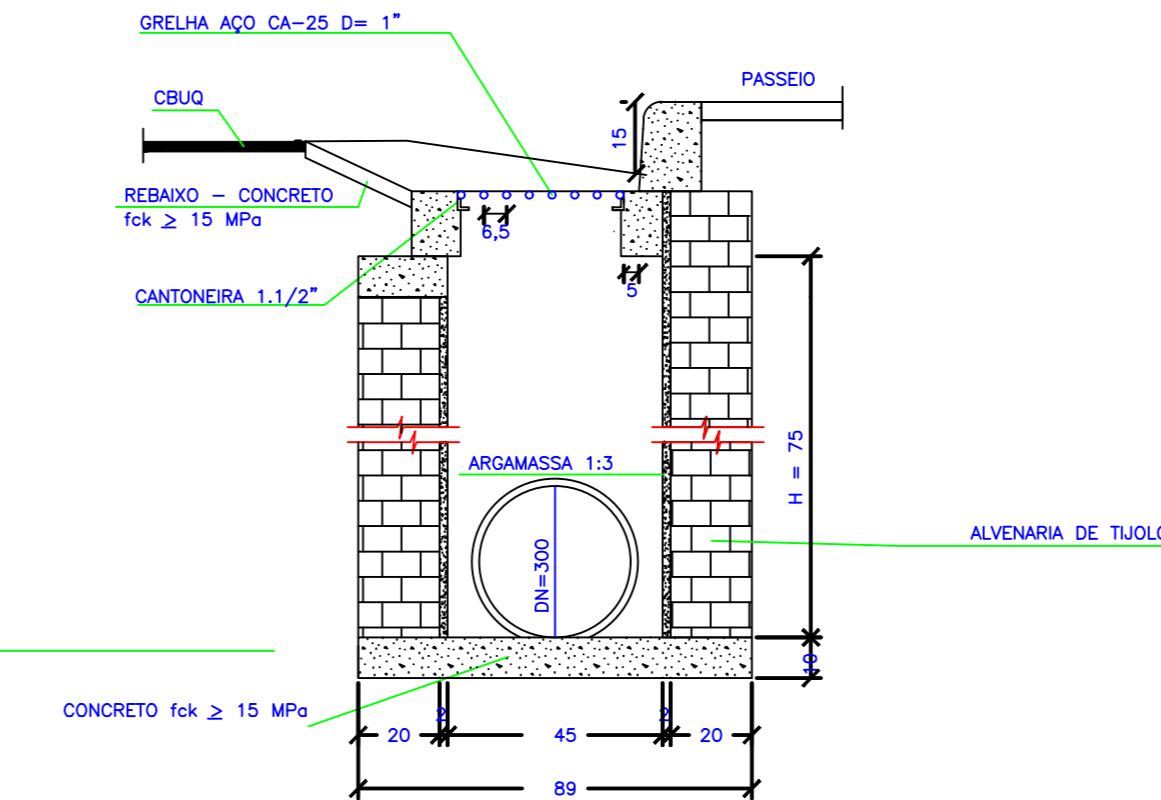
LISTA DE MATERIAIS
Ferro redondo D= 1,0" CA-25 5,0 m
Cantoneira 1 1/2" x 3/16 2,10 m



CORTE A-A

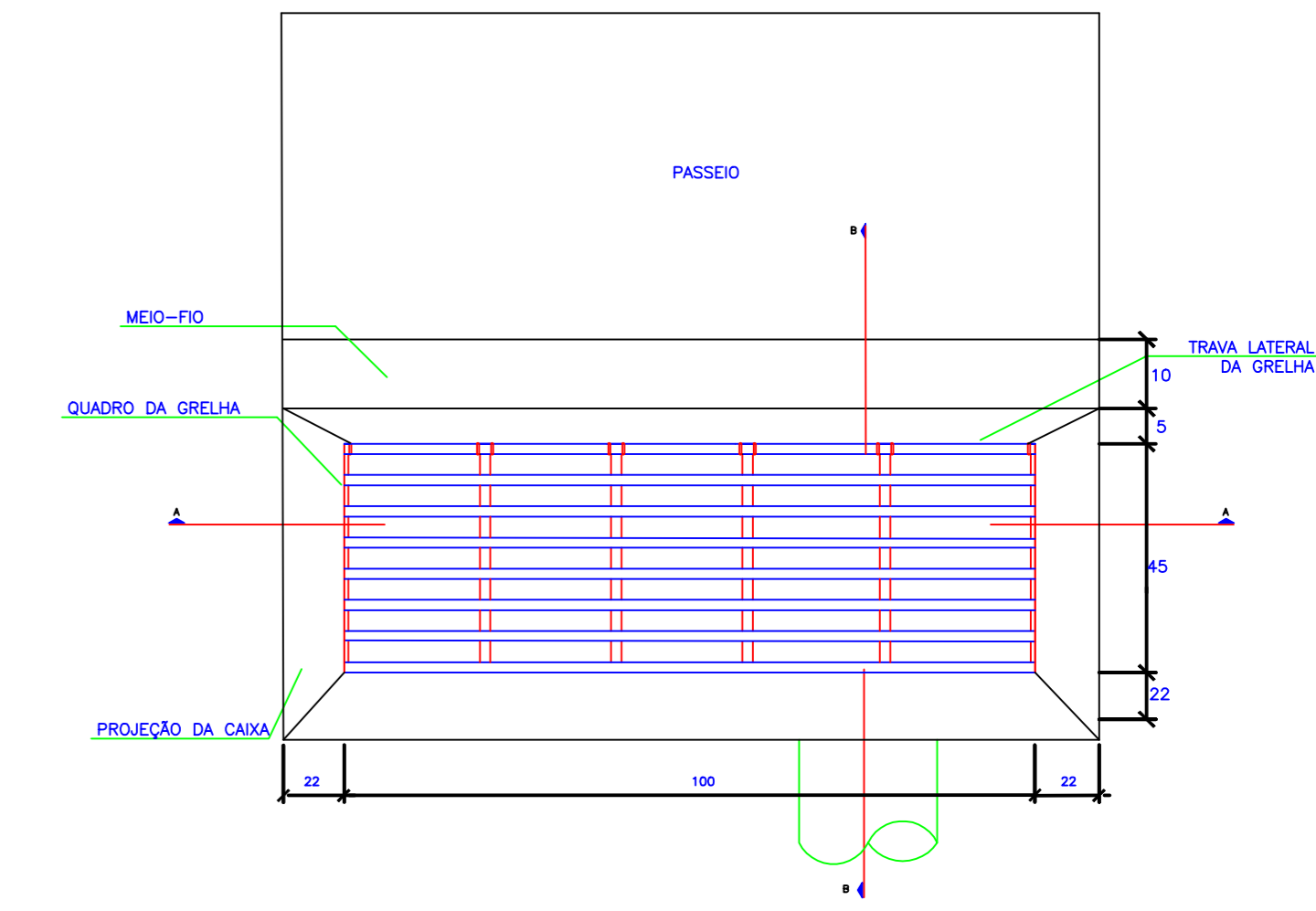


CORTE B-B

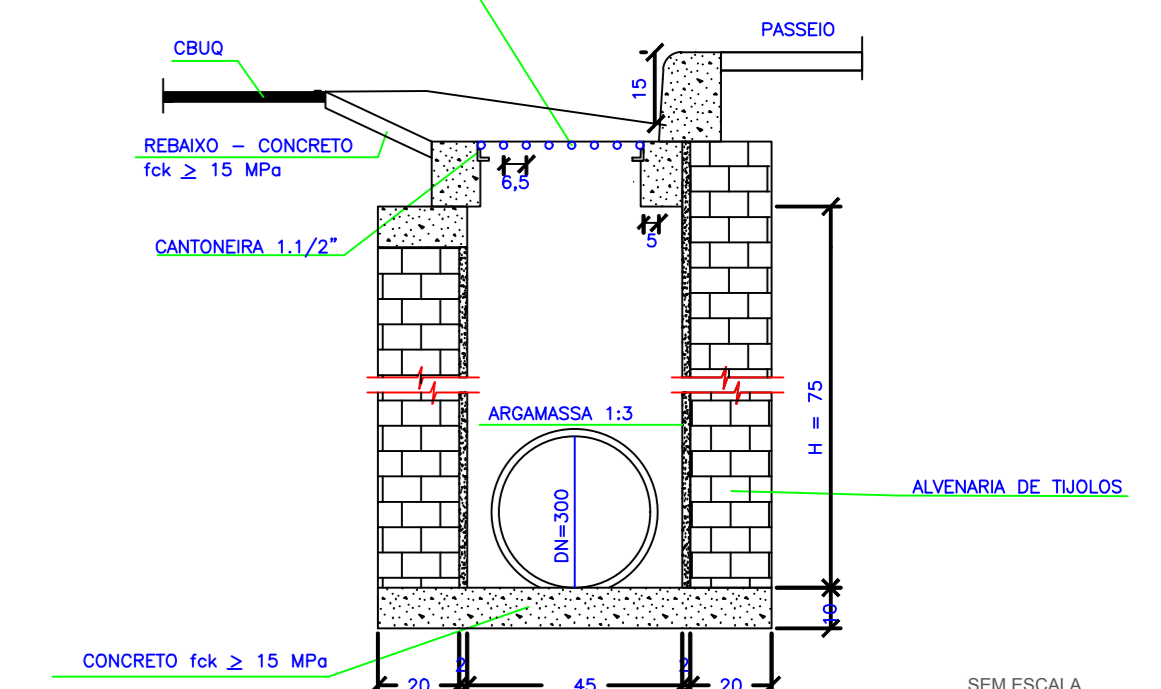
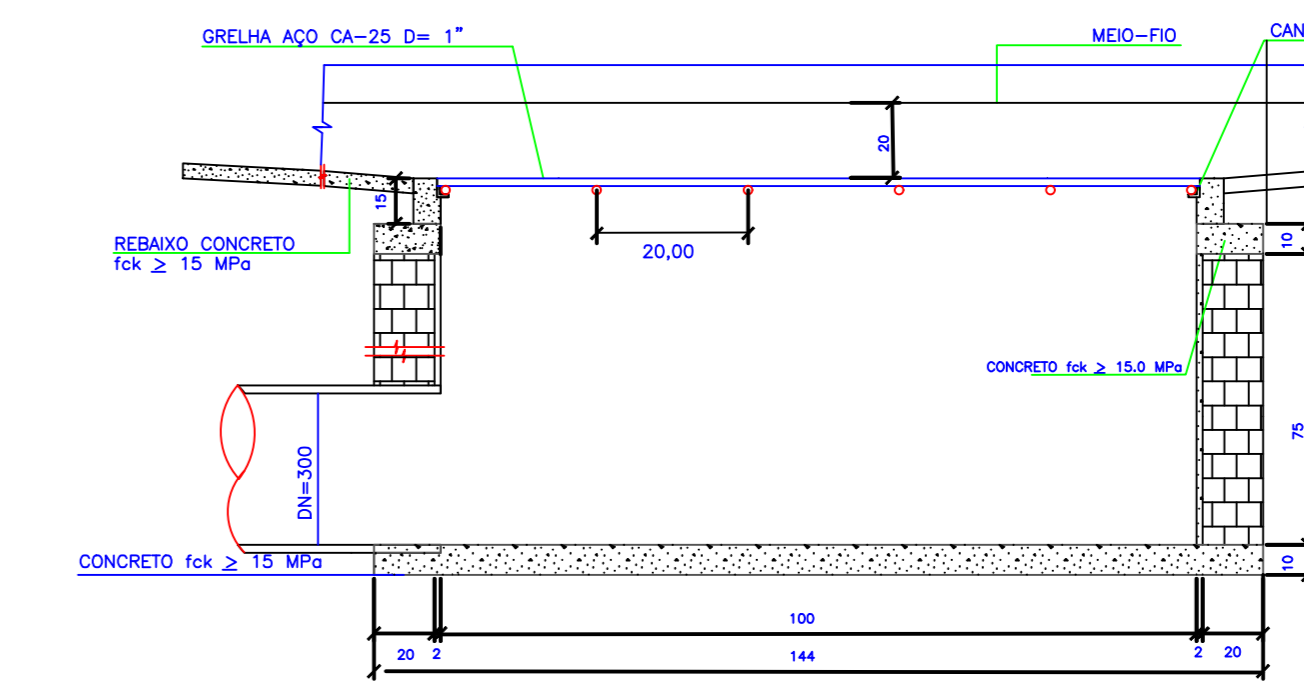


BOCA DE LOBO TIPO GRELHA SAÍDA FRONTAL
BL 3, 4, 7, 8

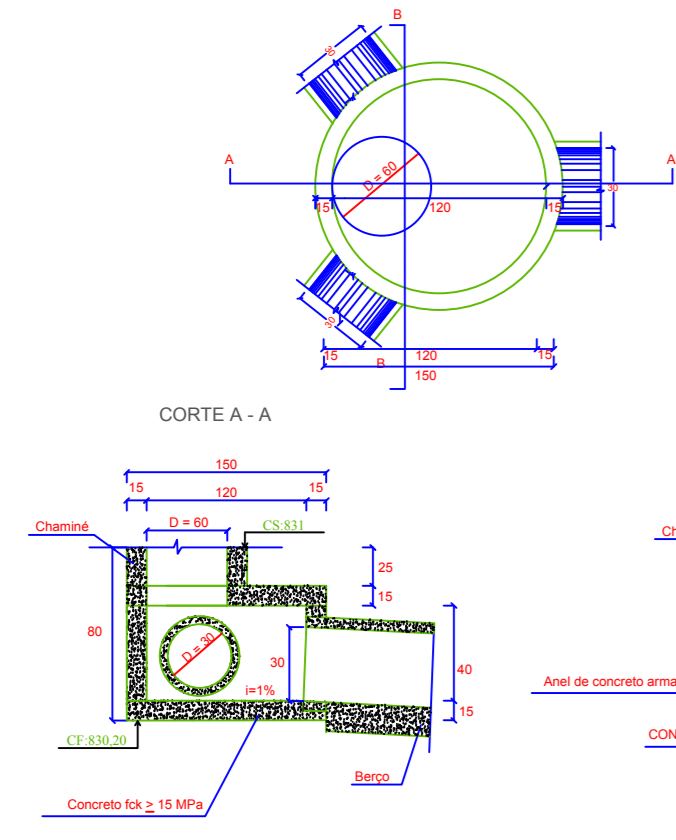
LISTA DE MATERIAIS
Ferro redondo D= 1,0" CA-25 8,0 m
Cantoneira 1 1/2" x 3/16 3,0 m



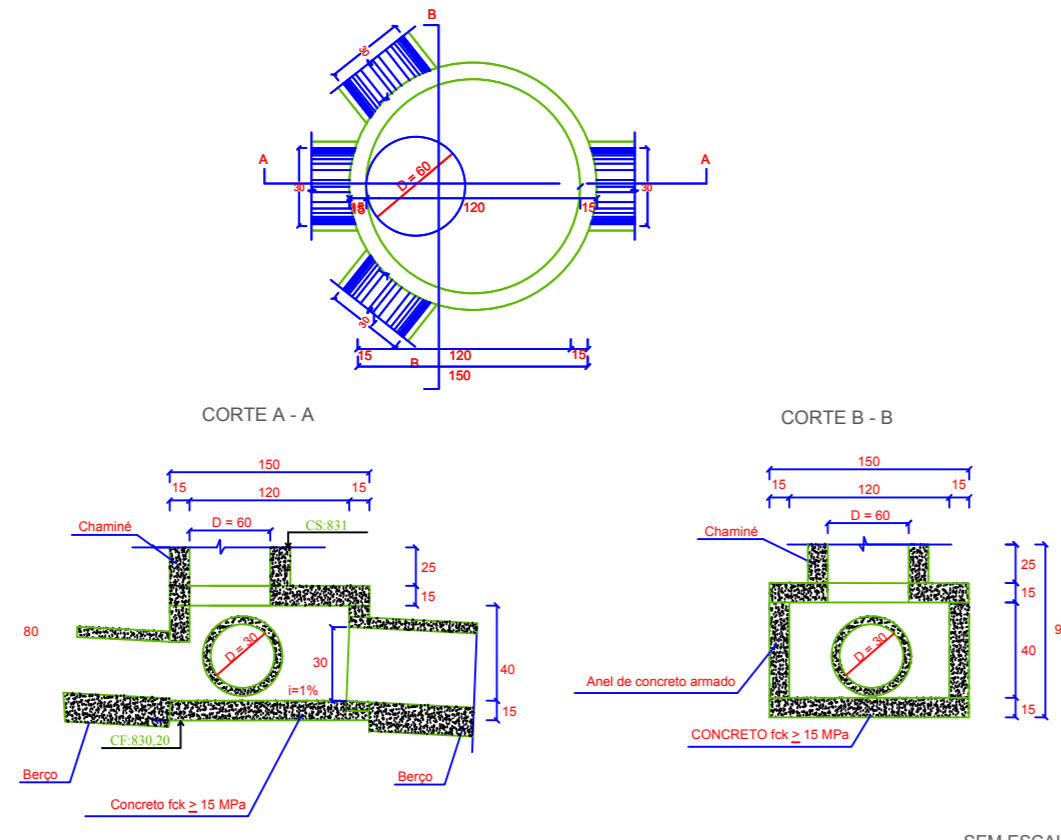
CORTE B-B



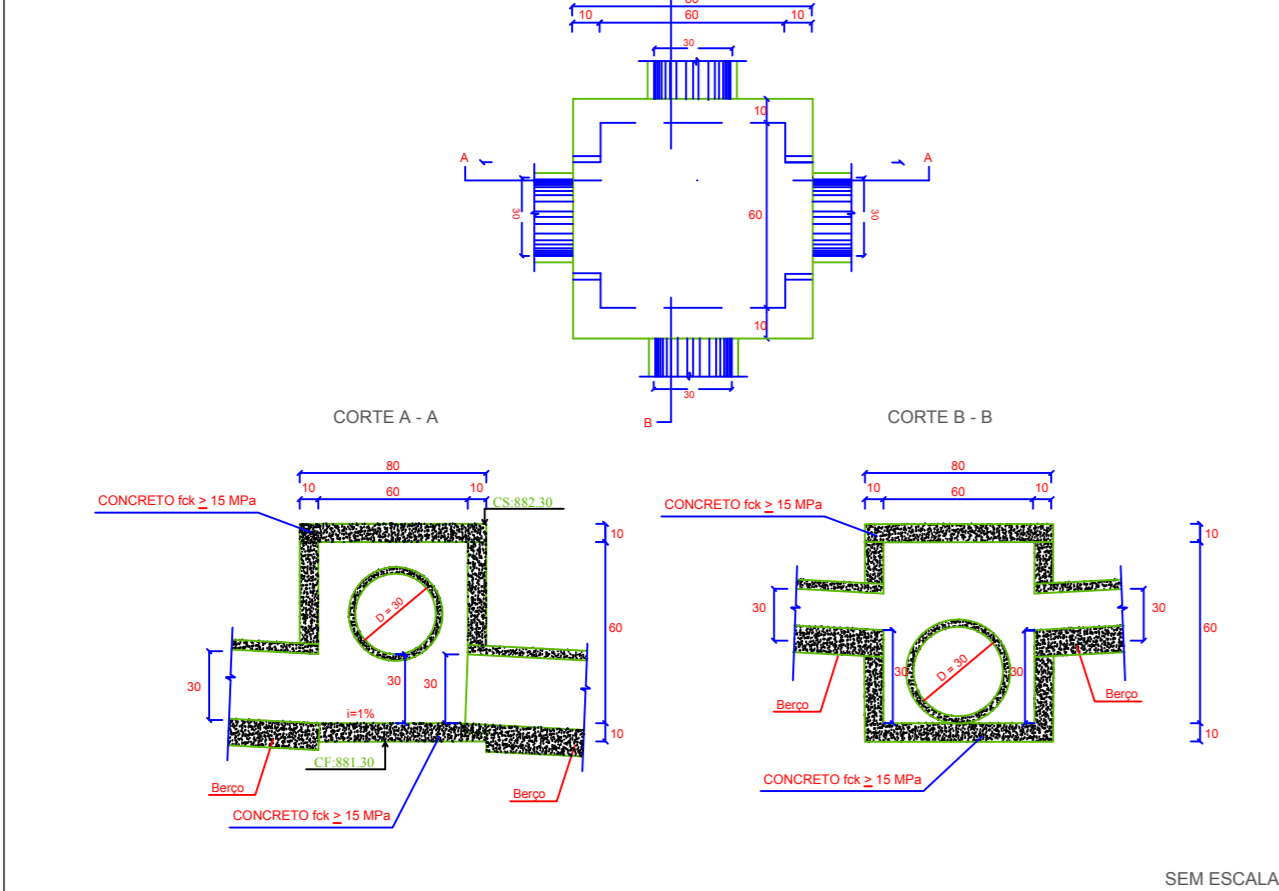
PV 1



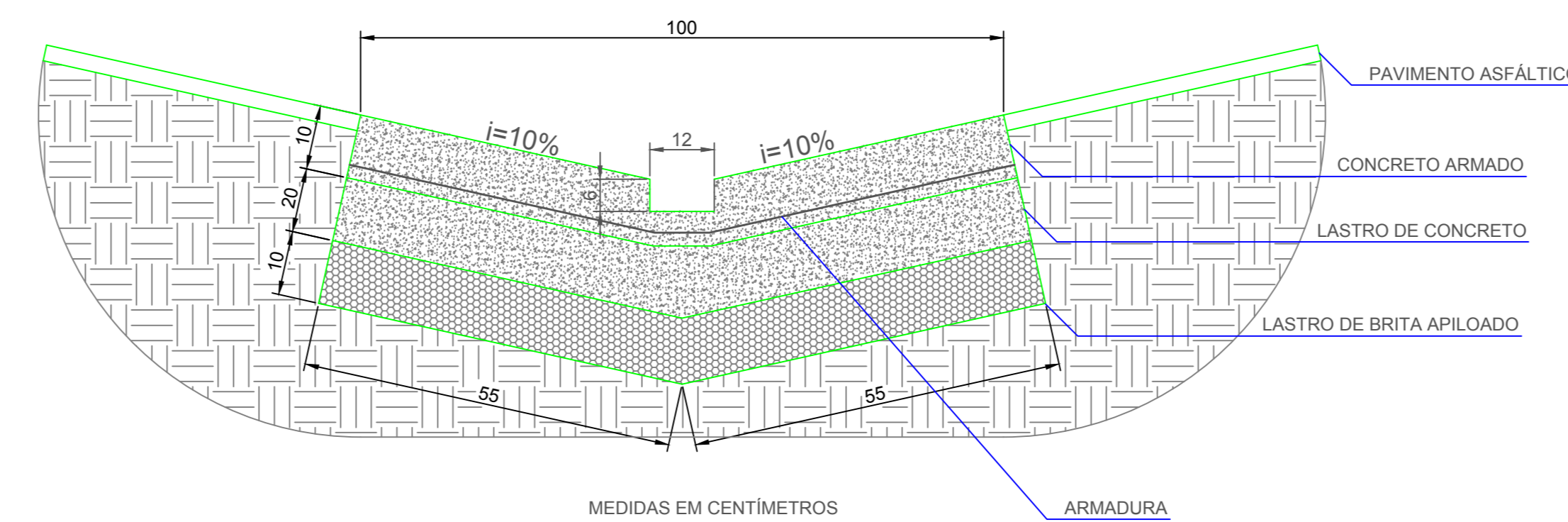
PV 2 = PV3



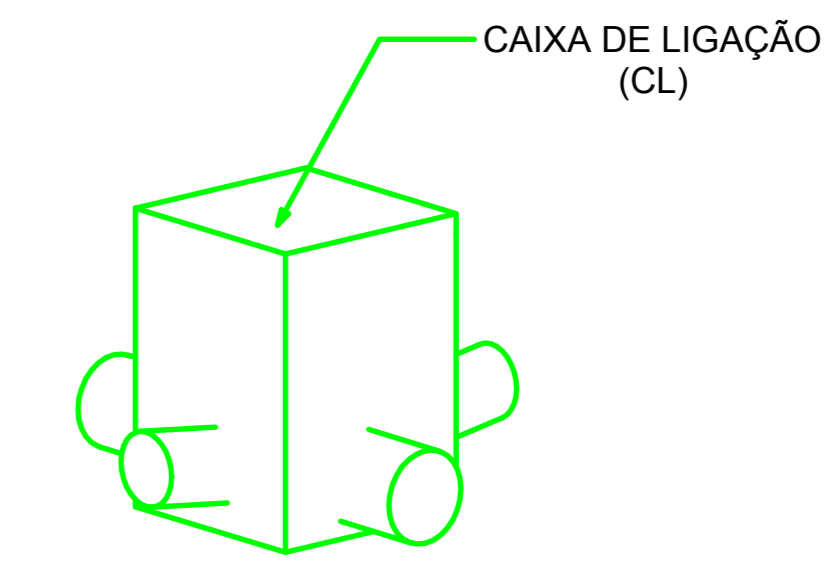
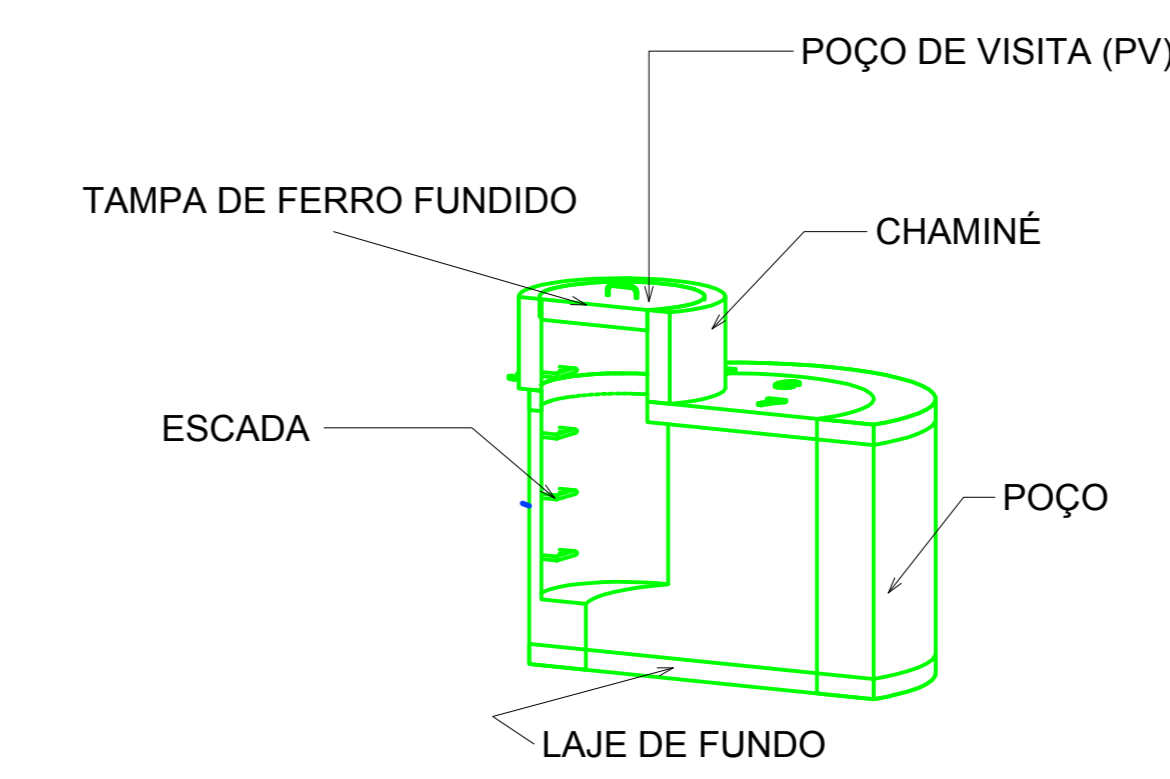
CL1=CL2



SARJETÃO



MEDIDAS EM CENTÍMETROS



CENTRO UNIVERSITARIO DO SUL DE MINAS
UNIS-MG

CURSO	ENGENHARIA CIVIL	DATA:	NOVEMBRO/2020
DISCIPLINA	TRABALHO DE CONCLUSÃO DE CURSO	ESCALA:	SEM ESCALA
ORIENTADORA	IVANA PRADO DE VASCONCELOS	FOLHA:	02
ORIENTADO	JACKSON ANTUNES VILAS BOAS ALVES		
ASSUNTO	DETALHAMENTO DOS DISPOSITIVOS DE DRENAGEM POÇOS DE VISITA, BOCA DE LOGO, CAIXAS E SARJETÃO		